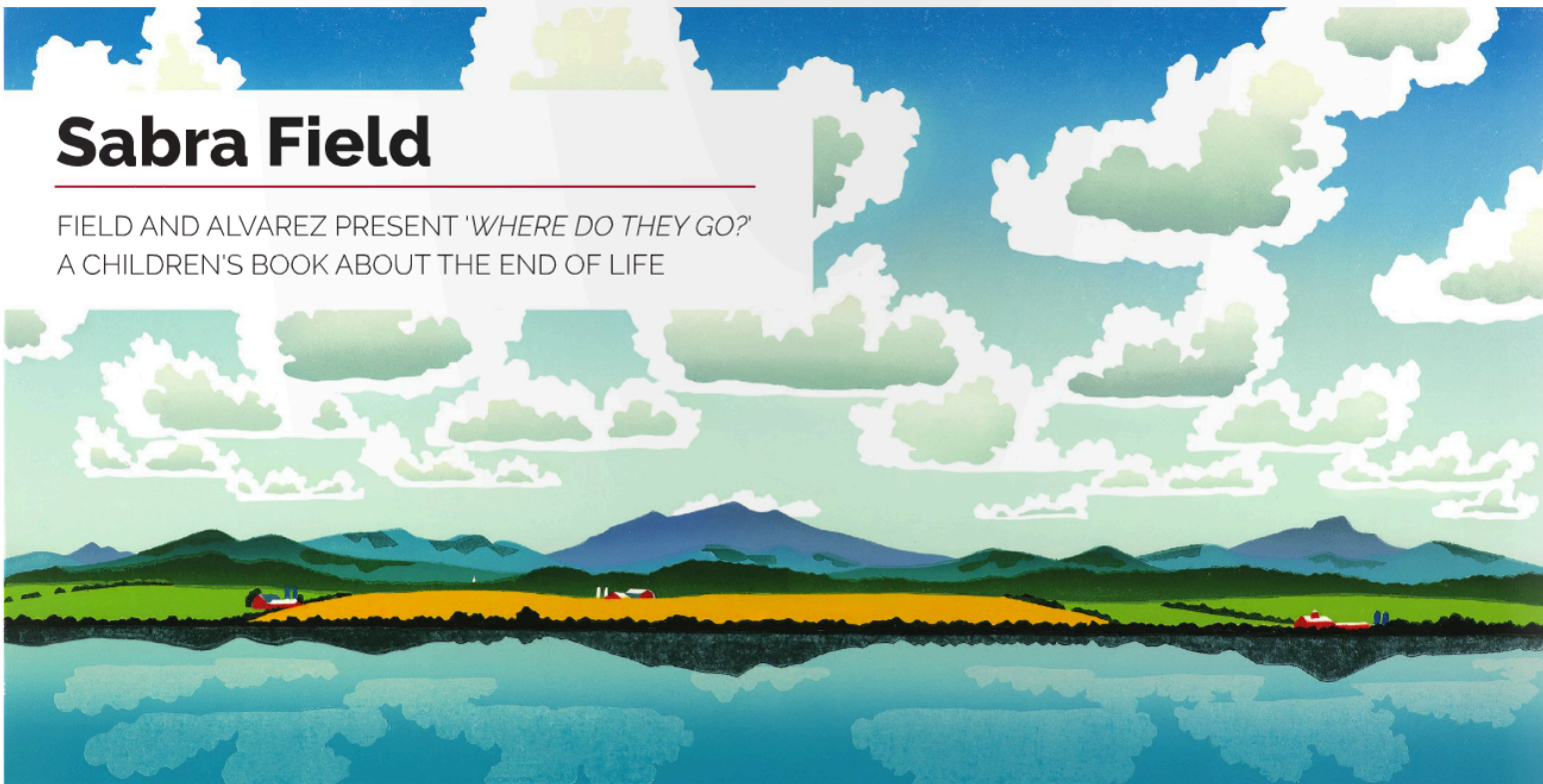


# Sabra Field

FIELD AND ALVAREZ PRESENT 'WHERE DO THEY GO?'  
A CHILDREN'S BOOK ABOUT THE END OF LIFE



BY ISABEL  
LOWER

Edgewater Gallery is proud to present artist Sabra Field and author Julia Alvarez for the official launch of *Where Do They Go?* A children's book of poetry and illustrations created by these Vermont luminaries, this book asks possibly the hardest question there is about the end of life. Saturday, Oct. 15, Field and Alvarez will read and discuss their project from 2-4 p.m. at Edgewater Gallery on the Green. The authors will sign copies of the book after the talk, which will be sold at Edgewater by the Vermont Bookstore. From 4-6 p.m. on the

same day, an opening reception will be held for Sabra Field and the five other artists showcased in their October featured exhibit, "Of the Land."

The prints that Field created for *Where Do They Go?* will be on display at Edgewater. These 10 prints are bound together in a standing accordion sculpture; this set is one of only two proof copies that the artist made for the book. They feature children of all races of grade-school age who are comforted by featureless figures of the departed, formed as negative space or in clouds. These figures interact with elements of the natural world: snowflakes, raindrops, feet in the sand as the surf slides in. Alvarez's poem begins by asking if these

phenomena are a sign of their loved ones.

*"Do they go where the wind goes when it blows?"*

The prose broadens to show how grief changes with time, and how we grow by it.

*"Sometimes, very briefly, I catch just a glance in the hills' quiet stillness, in a storm's dark advance."*

Field's final prints in the series similarly expand to full views of mountains, the sunrise, and the road ahead.

CONTINUED ON PAGE 3



## EDGEWATER GALLERY

open 7 days at two middlebury locations:  
six merchants row & one mill street  
[edgewatergallery-vt.com](http://edgewatergallery-vt.com)



## ART

CONTINUED FROM PAGE 2

Originally from Tulsa, Oklahoma, Field came to Vermont to attend Middlebury College, and has lived in the state since 1969. She has been widely collected by museums, and received accolades from many institutions, including honors from two Vermont governors. An octogenarian, Field continues to publish her hand-pulled woodblock prints from her studio in South Royalton.

In a recent interview, Field answered questions about her collaboration with Alvarez, her new pieces on view at Edgewater on the Green, and what she is still finding at work in the studio after an extraordinary career.

**Your work is well known, stemming from a career that spans decades: do you still find anything new in woodblock printing technique?**

I try to solve a new problem with each new print. I've never lost interest in the medium but I do use gouache sometimes or linoleum.

**And in terms of subject, how has your inspiration and focus changed over the years, and how do you choose what to work on now?**

As I get more experienced I can suggest more illusions, so less subjects seem daunting. I can go from illustration to poetic simplicity and that keeps my interest.

**What is a recent work you have enjoyed making?**

The piece I am most pleased with at Edgewater

is the five part landscape presented in a fold out frame reminiscent of Renaissance altar pieces. It is a pastoral landscape titled "Gilead" (which is the land of milk and honey.) It's my way of saying to Vermont, "Thank you for taking me in."

**The "Sheep Farm Suite" is a dynamic set of four seasonal prints. Could you speak to the inspiration behind these works?**

The suite of four is called the "Farm Suite" and "Sheep Farm" is the autumn subject, a Greek Revival farm house suggesting the 19th century era when sheep were King of Vermont Agriculture. "Wind Farm" has beautiful big wind turbines, kinetic sculptures on a ridge line over a summer scene of corn and hay. It says "We want to take care of our energy consumption without exploiting places other people live." The winter image, "Star Farm," has a huge crop of stars filling a night sky over a snow bound house and barn. And "Horse Farm" has mares and foals on a spring green meadow at sunset. The prints are sold singly or as a group to hang side by side. The size is the Japanese "Oban" 15" x 10" like several of my seasonal suites about Vermont.

**How was your collaboration with Julia Alvarez on *Where Do They Go?***

Julia wrote a remarkable poem about death from the point of view of a child experiencing the loss of someone important to him or her. The confusion and sorrow at the beginning are transformed into a perception of the world as rational and hopeful. I think the poem speaks to us all. I tried to internalize the emotions and bring them to life in the persons of many different children. I've had one of the two proof copies prepared to exhibit as an accordion bound stand up "sculpture" which will be for sale. And books published by Seven Stories Press will be available which Julia and I will sign.

## Where Do They Go?



PHOTO / BILL EICHNER

**What:** Sabra Field and Julia Alvarez will read and discuss *Where Do They Go?* an illustrated children's book of poems about the end of life.

**Where:** Edgewater Gallery on the Green, Middlebury

**When:** Saturday, Oct. 15 from 2-4 p.m.

**The subject matter is very heavy — do you think visual art can address difficult subjects like death in a way that words can't?**

Sorrow and despair are addressed by art better than by newspaper accounts or photos. Maybe better than by traditional religions. The greatest war reporting and the most compassionate war image is, for me, Pablo Picasso's "Guernica," an account of the bombing of innocent civilians during the Spanish Civil War. Especially the two outstretched hand with flowers in it, which is a simple graphic that says "peace" without words.

For her participation in the "Of the Land" group show at Edgewater Gallery, Field has selected recent works of her best known subject matter — the Vermont landscape. Field's vibrant portrayals of our fields, mountains, and sky have gained her renown around the world as a premiere print-maker, and a monument among Vermont's rich arts community.

— Isabel Lower works at Edgewater Gallery.



*Island in a Sea of Stars*, archival pigment print from woodcut, 34" x 34"



## Belcea Quartet

Performing Schubert Quartet no. 10 in E-flat Major, Brahms Quartet in A Minor, and Schubert Quartet no. 14 in D Minor, *Death and the Maiden*

**Thursday, October 20**

7:30 PM, Mahaney Center for the Arts, Robison Hall  
TICKETS: \$25/20/6

Pre-performance Dinner at 6:00 PM  
TICKETS: \$30



MIDDLEBURY  
PERFORMING  
ARTS SERIES

802-443-MIDD (6433) | [go.middlebury.edu/tickets](http://go.middlebury.edu/tickets)  
MIDDLEBURY COLLEGE